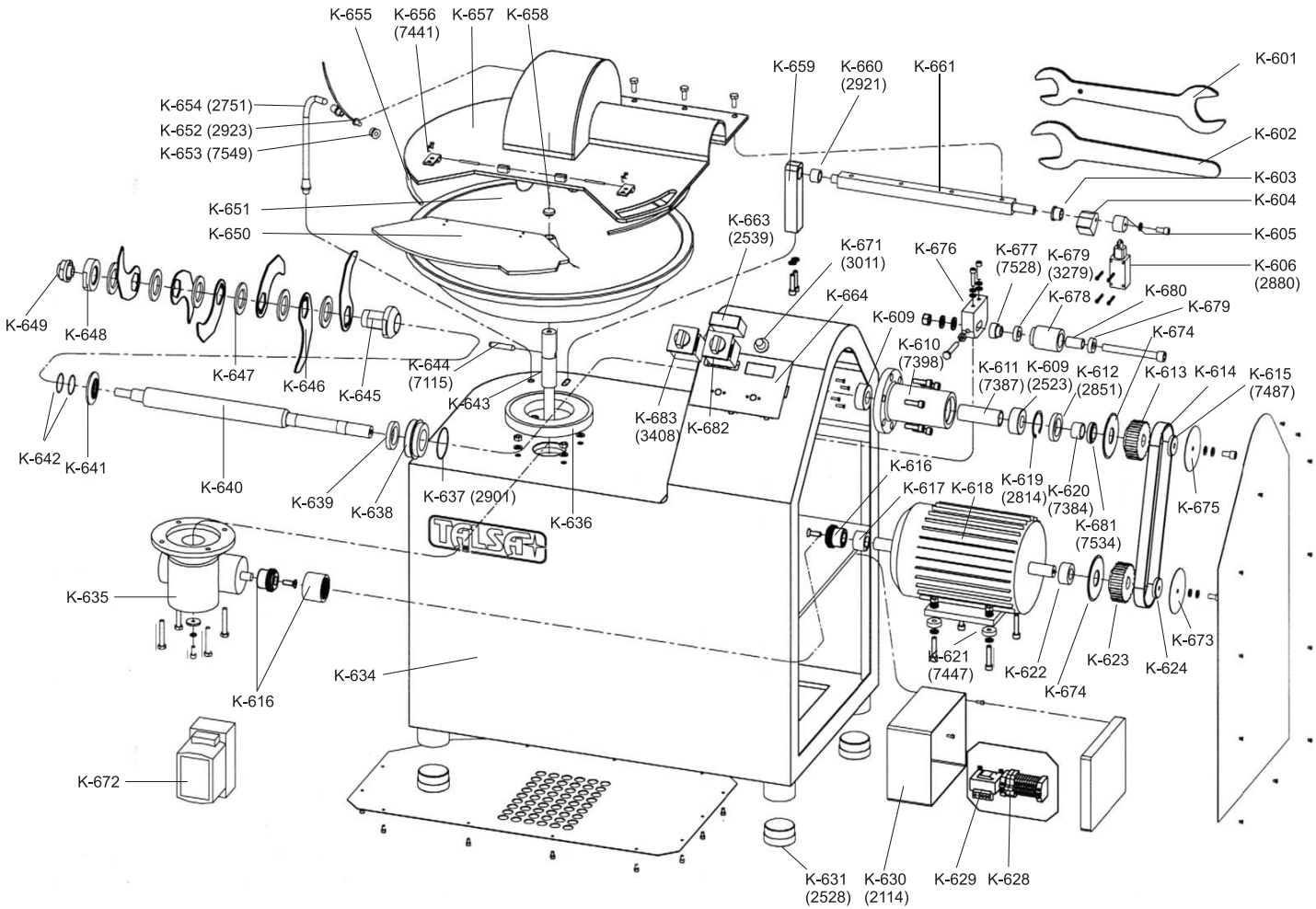


Parts Breakdown

Model FP-ES-0030 10878





Parts Breakdown

Model FP-ES-0030 10878

Item No.	Description	Position	Item No.	Description	Position	Item No.	Description	Position
36180	Knife Dismantling Wrench 46/65mm (Combined) for 10878	K601	36137	Isolating Box Himel SL03360 170 105 82 Opaque Lid for 10878	K630	36160	Hinges Set Right/Left Stainless Steel Antinoise Lid for 10878	K656
36181	Knife Dismantling Wrench 65mm for 10878	K602	27880	Leg Shock Absorber Green Rubber D.76 D.73mm (Mix) for 10878	K631	36212	Stainless Steel Lid for 10878	K657
36182	Bronze Bushing B11 B-20-28-20/35-4 with Collar (Lid) for 10878	K603	76725	Machine Frame for 10878	K634	36213	Cap for Center Cone of Bowl Stainless Steel for 10878	K658
36183	Levy Top Lid K30 Steel for 10878	K604	36194	Gearbox MI-60F REL. 1/100 L for 10878	K635	36214	Columna Steel Inox Soporte Lid for 10878	K659
36184	Ring Microswitch AISI303 Lid Activator for 10878	K605	36195	Hoop Inferior Hold Bowl-Bench Plastic White for 10878	K636	36164	Bronze Bushing B11 A-20-25-20 (2nd Holder Column Stainless Steel Lid) for 10878	K660
30458	Micro Position Detector with Metal Wheel for 10878	K606	36140	O-Ring Int. Diam. 75 2 NBR872 for 10878	K637	36215	Squared Shaft Lid Folding Stainless Steel for 10878	K661
36117	Ball Bearing SKF (2 Shaft) for 10878	K609	36196	Knives Shaft Dressing Stainless Steel for 10878	K638	76717	Digital Thermometer Display for 10878	K663
36118	Knife Shaft Holder (Torpedo) Suelto without Accessories for 10878	K610	36197	Brushing Gasket (Knife-Shaft) for 10878	K639	36166	Board Front Panel Switch Green Lexan for 10878	K664
36119	Socket Separator Bearing for 10878	K611	36198	Brushing Gasket (Knives Shaft 1 VK30) for 10878	K639	36167	Potentiometer Mult. 5K Mod. 534 Spectrol Complete (with Variator) for 10878	K671
36142	Brushing Gasket (Shaft) for 10878	K612	36199	Knife-Head Shaft K30 Stainless Steel for 10878	K640	76727	Speed Controller for Optional Variable Speed for 10878	K672
36185	Toothed Pulley Poly-V D.100 60 Internal Holes 30mm (Knives Shaft) for 10878	K613	36200	Green Plastic Ring Knife Shaft for 10878	K641	36216	External Alum Washer HTD (Motor Pulley) for 10878	K673
36186	Toothed Belt HTD 1040-8M-50 Width 50mm Pitch 8mm (1 Cutter) for 10878	K614	36201	O-Ring Int. Diam 44 2 NBR872 (2 Dif-fuser) for 10878	K642	36217	Internal Alum Washer HTD (2 Motor and Knives Pulley) for 10878	K674
36122	Washer Knife Shaft Pulley for 10878	K615	36202	Gearbox Power Shaft Bowl AISI303 for 10878	K643	36218	External Alum Washer HTD (Knives Pulley) for 10878	K675
36187	Coupling Elastic Bowex M28 (Gearbox-Motor) for 10878	K616	36148	Pin for Bowl Gearbox Vertical Shaft for 10878	K644	36219	Holder Turnbuckle Belt HTD for 10878	K676
36188	Security Socket Pin Motor Plastic White for 10878	K617	36203	Hexagonal Knife Holder M41 2.5 Counter-Clockwise Stainless Steel for 10878	K645	36172	Washer Pulley Turnbuckle HTD D.35 16.2 24.5 for 10878	K677
36189	Motor 3-Phase 4.8/6HP 3 208V-60Hz 1700/3420 2 Clixons UL/CSA 2x Outlet for 10878	K618	36204	Knife, Flat for 10878	K646	36173	Belt Turnbuckle Pulley HTD 22-8M-30 for 10878	K678
36128	Circlip DIN472 Hole D.62 2mm (Knife Shaft Holder) for 10878	K619	36205	Spacer Ring 5mm Knives White for 10878	K647	36174	Ball Bearing SKF (Turnbuckle Pulley HTD 2) for 10878	K679
36130	Socket Pulley Knife Shaft D.40 30 22 2 for 10878	K620	36206	Spacer Ring 9mm Knives White for 10878	K647	36220	Spacer Ring Ball Bearings Turnbuckle HTD D.24 40.2 for 10878	K680
36131	Motor Holder Aluminio D.35 D.10mm for 10878	K621	36207	Knife Fixing Nut K30 Counter-Clockwise 2-Surface Stainless Steel for 10878	K648	36176	Spacer Ring Pulley Knives D.50 30 10.5 for 10878	K681
36191	Socket Separator Pulley Motor for 10878	K622	36208	Blocked Nut End of Knife Shaft M18 1.5 Counter-Clockwise Thread Stainless Steel for 10878	K649	36221	Switch 3-Phase with Disconnecter 25A 400V 60Hz for 10878	K682
36192	Toothed Pulley Poly-V D.100 60 Internal Hole 28mm (Motor) for 10878	K623	36209	Transparent Plexiglas Lid Anti-Noise for 10878	K650	30457	Switch 3-Phase with Disconnecter 25A 208/220V 60Hz for 10878	K682
36193	Washer Knife Motor Pulley for 10878	K624	36210	Bowl Stainless Steel for 10878	K651	36221	Switch 3-Phase with Disconnecter 25A 400V 60Hz for 10878	K682
36136	Glass Fuse 5 20 2Amp for 10878	K628	36156	Stainless Steel Probe D.10 15 3M Digital Thermometer for 10878	K652	36179	Switch Elek V2N PI/VK-HF25H-BH-SS 3-Phase 0-1-2 AT 45 for 10878	K683
76723	24V Maneuver Transformer Machines 380 400V for 10878	K629	36158	Protection Tube Reforced D.10/PG9 Thermometer Sensor (Probe) for 10878	K654			
76713	24V Maeuver Transformer Machines 380 400V for 10878	K629	36211	Set of 4 Curved Friction Band Lid APM1000 Green for 10878	K655			